

# Salon Design with



P & B Beauty Academy , NJ



Randy Rix Salon, MD



Epic Salon, Southern CA

**\$#!+ HAPPENS**

*but Great Salons don't just happen!*



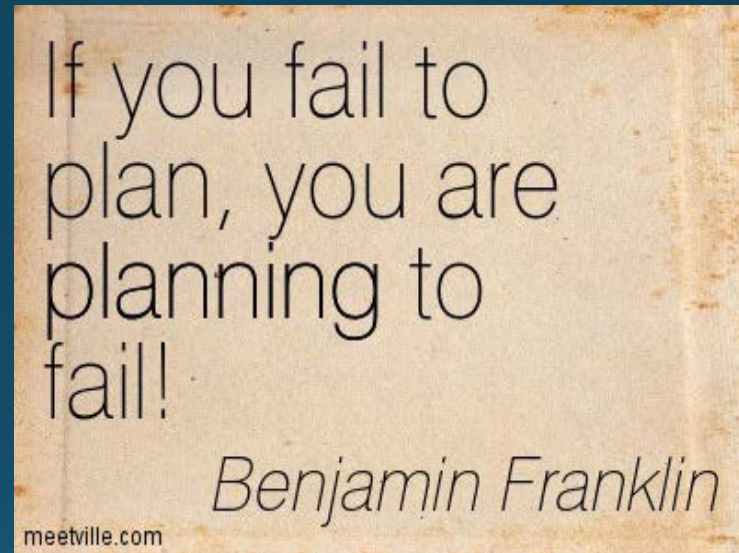
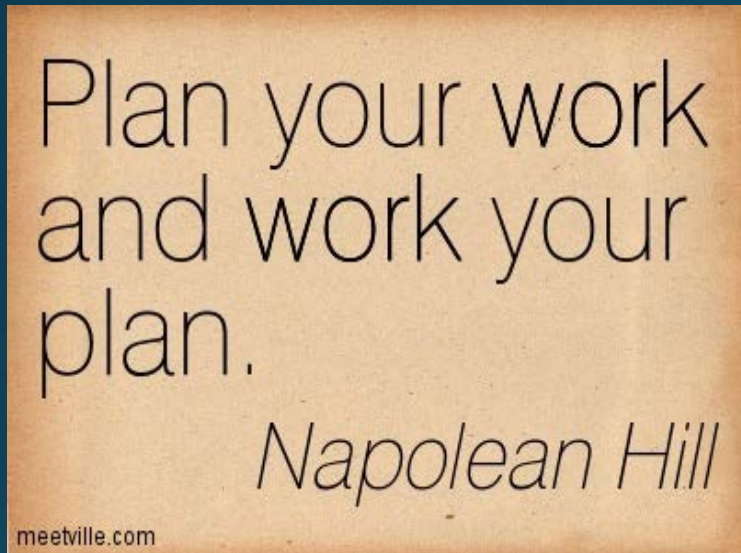
*Great Salons don't just happen ...  
They take planning!*



**NEIGHBORHOOD + NEIGHBORS + PARKING + LEASE**



# After you select the location ...



## YOU PLAN FOR A SUCCESSFUL SALON !!!





*They take planning !*

*Yes, it's primarily about the HAIR, but what about ...*

*Pedicure?      Manicure?      Acrylics?*

*Waxing?      Facial hair, or more?      Esthetics?*

*Massage?      Makeup?      Permanent Makeup?*

*Other?*



# Plan your work ... Work your plan !!!

Space Plan... best & most profitable use of the space

Architect Plan... for contractors and building permits

Interior Plan... lighting, floor, colors, overall theme

Seek the help of professionals !!!

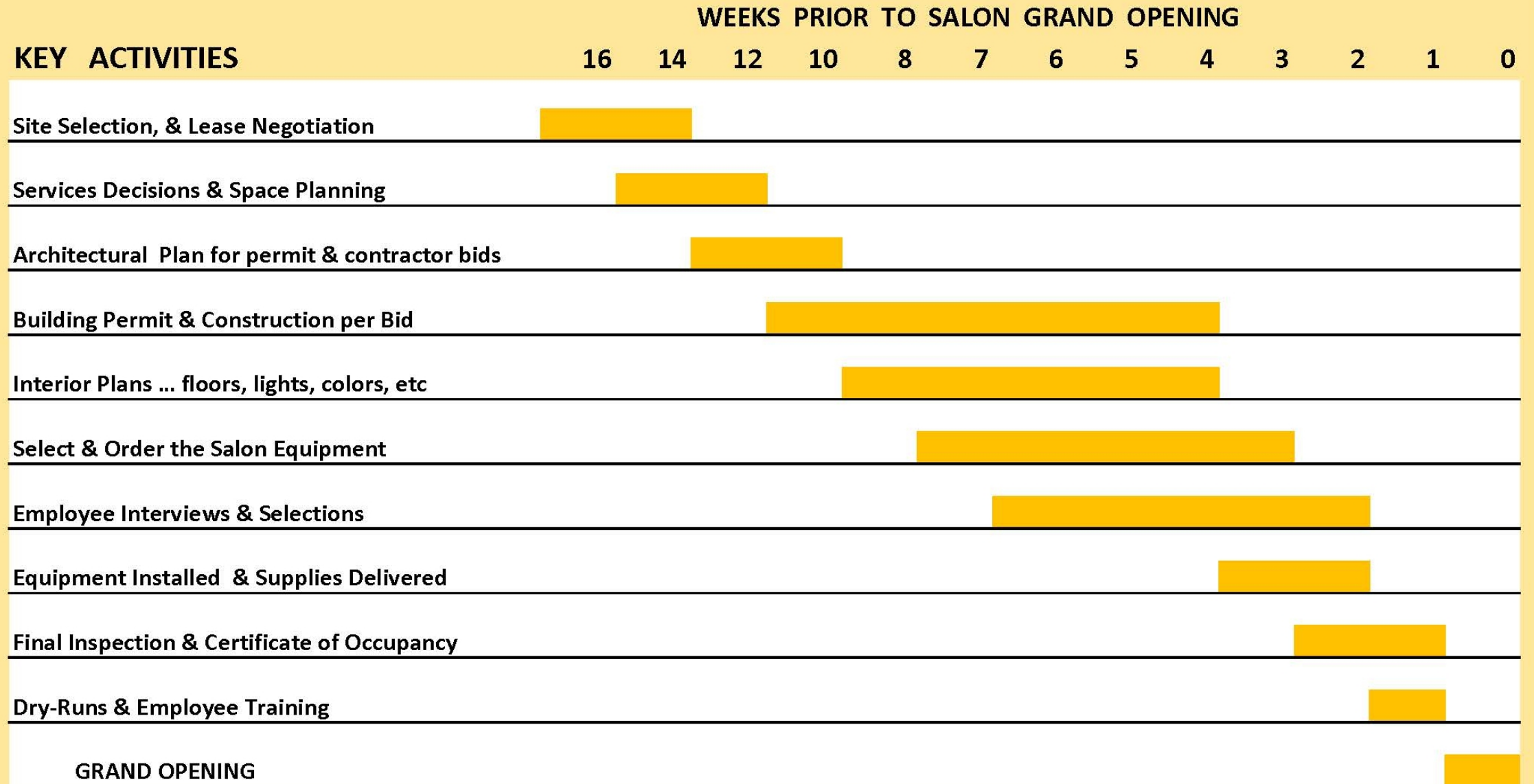
**\$#!+ HAPPENS**

*but Great Salons don't just happen!*





## Suggested Planning Horizon



# New Salon Checklist...

**1.** Graphics for Salon Logo  
Outside signage and door mat(s)  
Stationary & envelopes  
Business cards & Appointment cards  
Grand Opening  
Advertising

**2.** Client service records  
Salon software  
Accounting software  
“Deposit Only” stamp  
Cash drawer & card swipe device  
Office supplies  
Salon price list for services  
Retail products & prices

**3.** Magazines for customers  
Towels for shampoo area  
Towels for restrooms  
Laundry supplies  
Vacuum and broom(s)  
Waste baskets  
Cleaning supplies  
Paper towel dispenser  
First aid kit  
Background music  
Fire extinguishers  
State & local codes

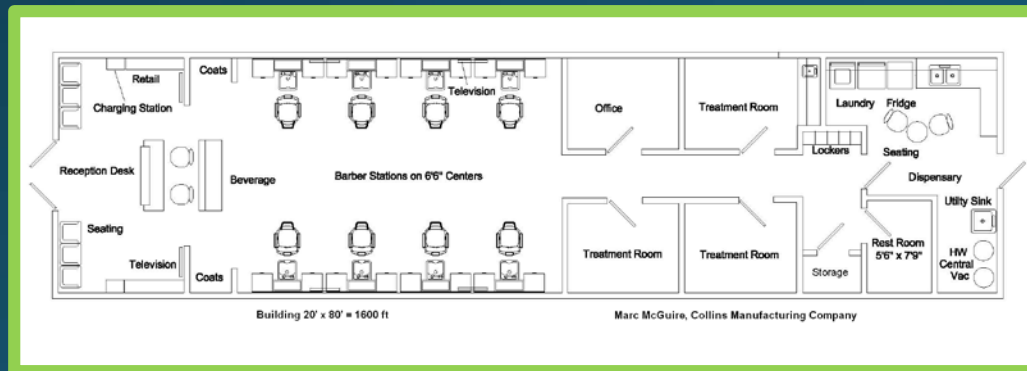
**4.** Employee selection  
Employee training



# Nominal Space Requirements

Including some provision for reception, shampoo, styling, drying, dispensary, and restrooms, you nominally need *150 – 200 sq. ft. for each hair stylist.*

<u># of Stylists</u>	<u>Sq. Ft. Req'd</u>	<u># of Stylists</u>	<u>Sq. Ft. Req'd</u>
3	450-600	6	900-1200
4	600-800	7	1050-1400
5	750-1000	8	1200-1600



*Additional space is likely needed for additional salon or spa services.*





# Electrical & Water Requirements



Nominal needs for heating, cooling, and lighting ... but salon specific electrical needs are:

Styling Station, each stylist	110 volts, 20 amps
Hair Dryers, each	110 volts, 10 amps
Electric Shampoo Chair	110 volts, 10 amps
Reception Desk	110 volts, 15 amps
Dispensary Area	110 volts, 20 amps
Pedicure Units	110 volts, 15 amps
Washing Machine, towels	110 volts, 15 amps
Electric Dryer, towels	220 volts, 45 amps
Electric Hot Water Heater	220 volts, 45 amps

## WATER

1 to 2 bowls  
3 to 5 bowls  
6 to 8 bowls

## Water Supply

$\frac{3}{4}$ " line  
1" line  
1  $\frac{1}{4}$ " line

## Hot Water Heater

50 gallons  
75 gallons  
100 gallons

## Recovery Rate

75 gallons/hour  
150 gallons/hour  
200 gallons/hour



# Shampoo Question

*Do you shampoo from the back, or the side?*



# Backwash Shampoo Units ....



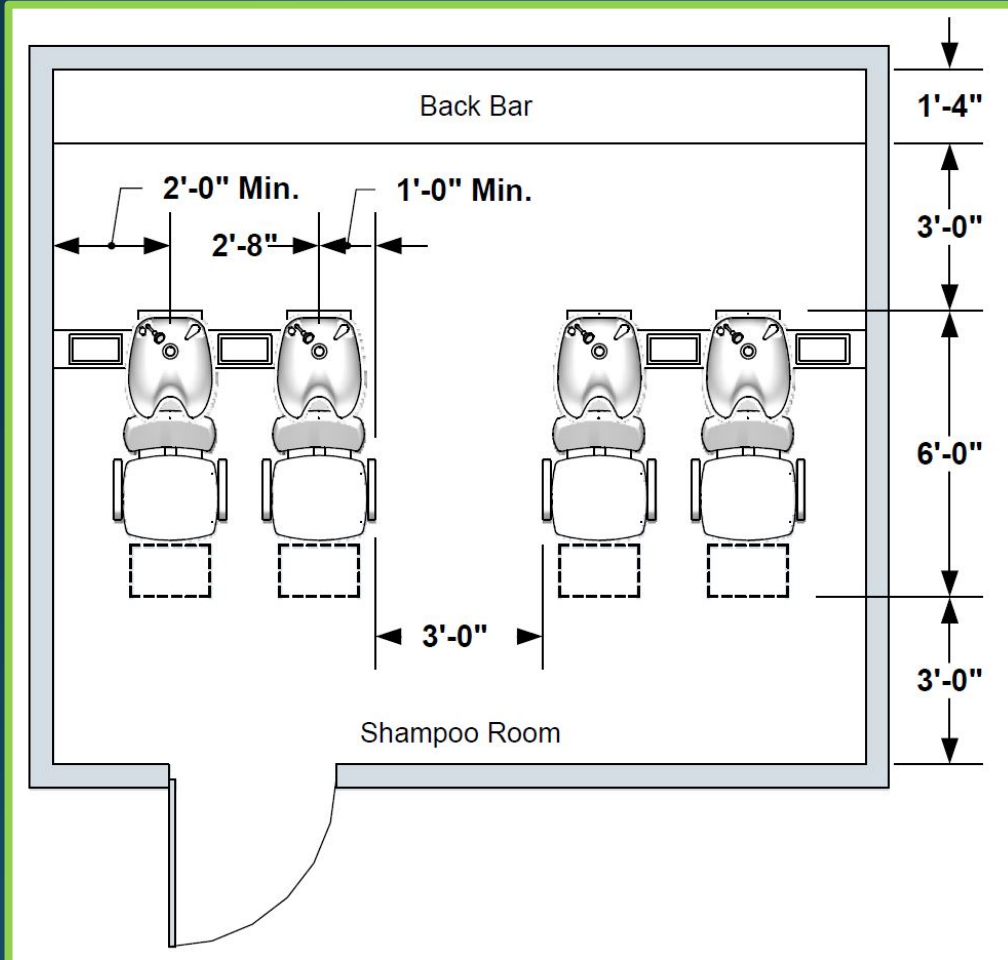
*Note the Back Bars !*





# Backwash Shampoo Space Required

## *Backwash Units in a Room*



## *Between Two Walls*



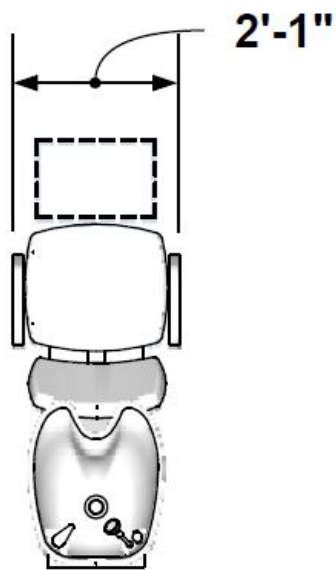
### **Backwash Shampoo:**

1. Allow 32" left to right for each unit.
2. Allow 30" to 36" behind units for stylists
3. Allow 60" for conventional chairs, or 72" for chairs with kickout leg rests.
4. Allow 3'-0" in front of chairs.
5. Allow 30" to 36" for aisles.
6. Overall, allow 13'-4" front to back, or 12'-4" as a minimum.

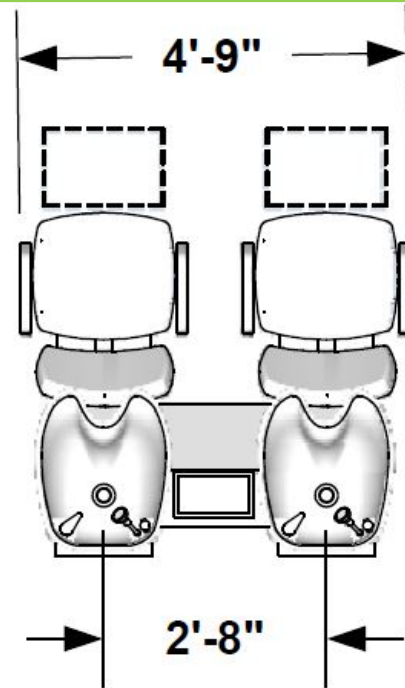


# Backwash Shampoo Space Required

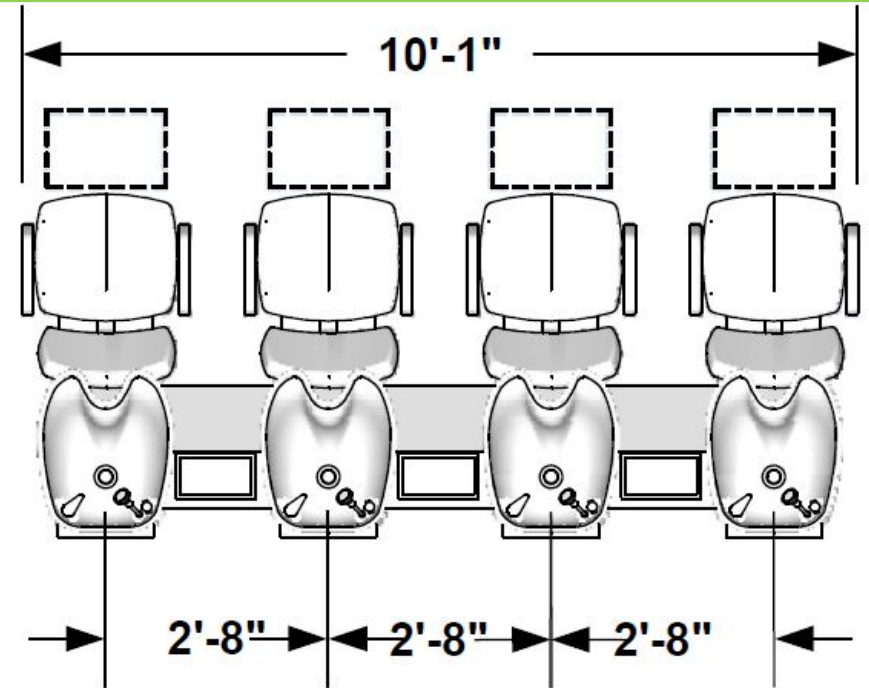
*Free Standing Backwash Stations – Plumbed from the Floor*



Single Shuttle Island



Double Shuttle Island



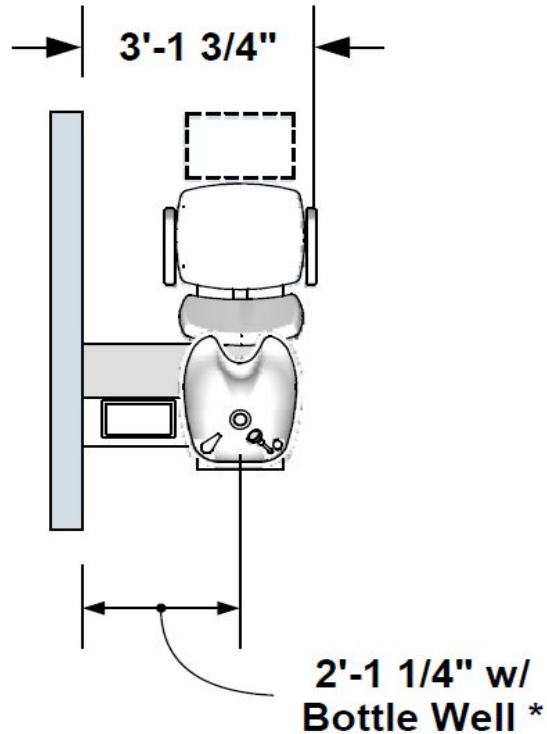
Multiple Shuttle Island





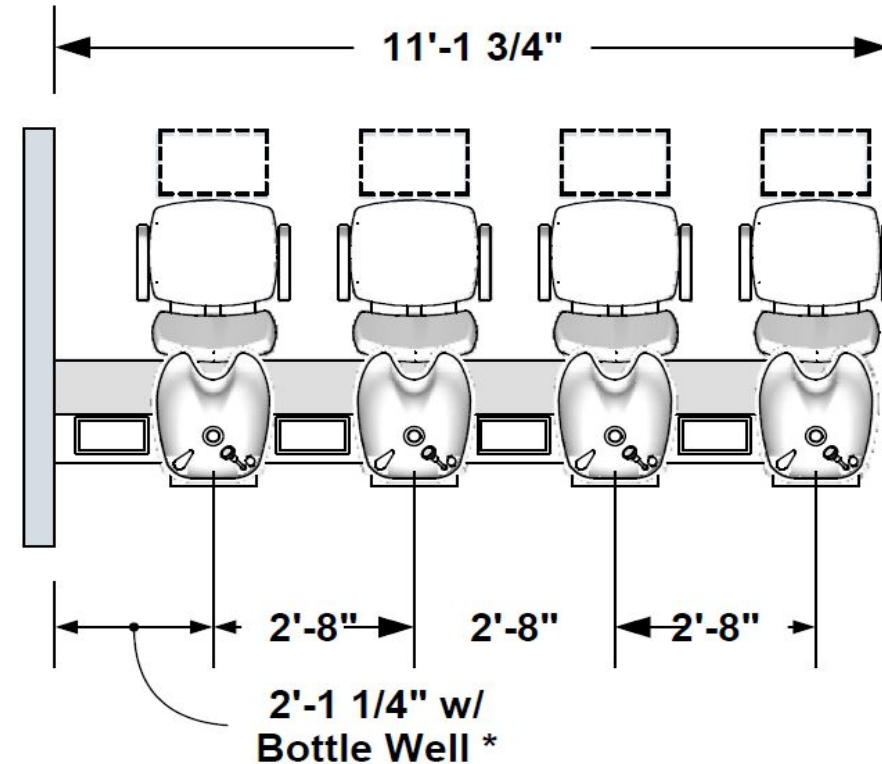
# Backwash Shampoo Space Required

## *Peninsula Arrangement – Plumbed from the Wall*



**Single Shuttle Peninsula - Configured Left**

\* This Dimension May Be Reduced  
To 1'-4" If The Bottle Well Is Deleted



**Multiple Shuttle Peninsula - Configured Left**

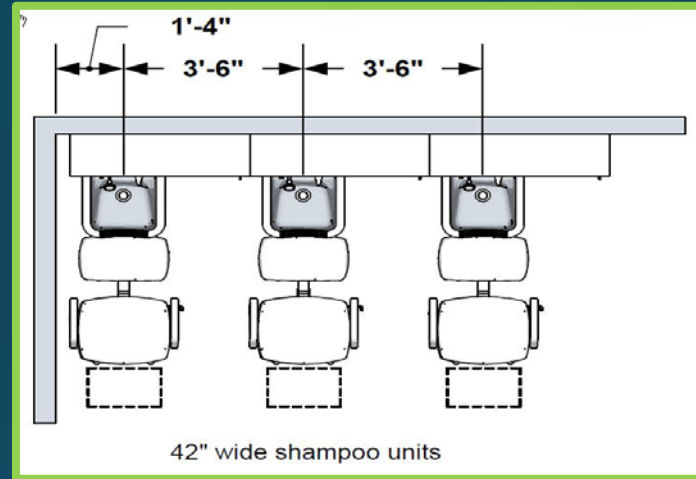
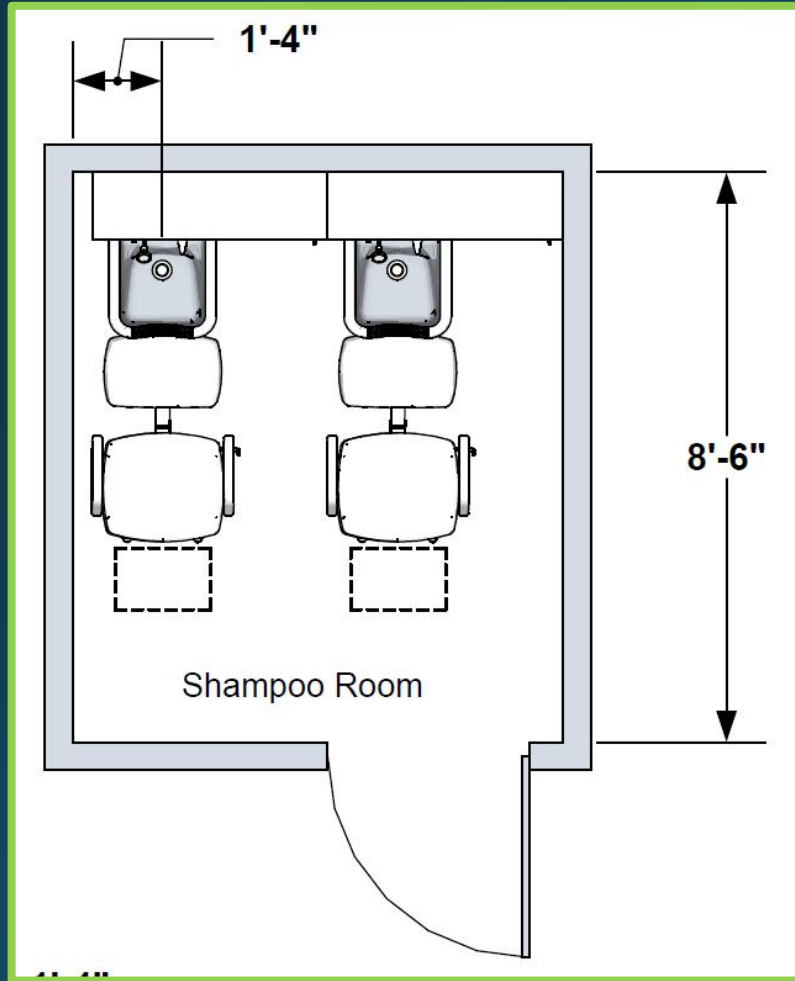
\* This Dimension May Be Reduced  
To 1'-4" If The Bottle Well Is Deleted



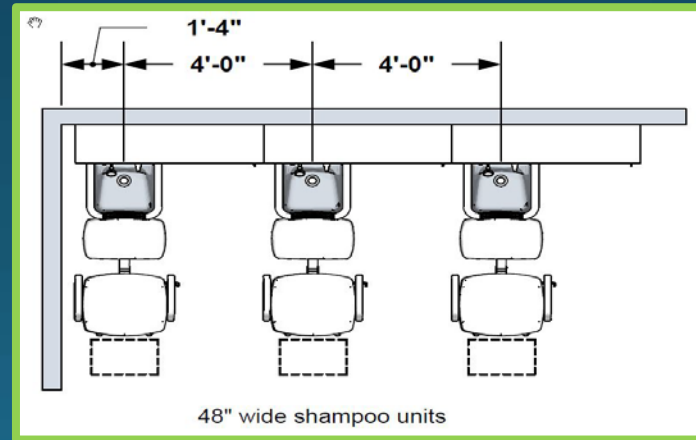
# Sidewash Shampoo Units



# Sidewash Shampoo Space Required



42" centers



45" centers

48" centers





# HairCutting - Styling Area



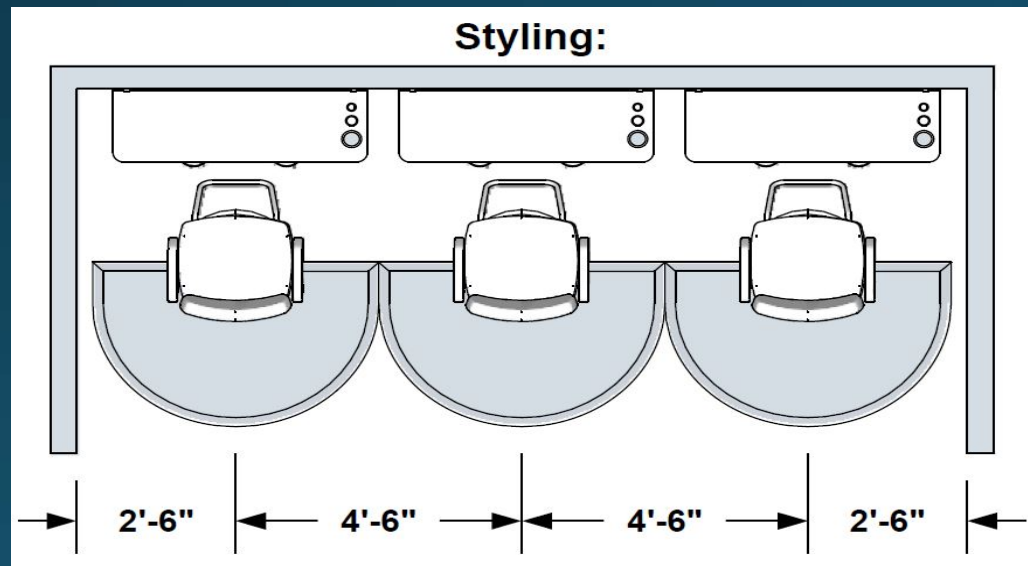
54" centers



60" centers



72" centers



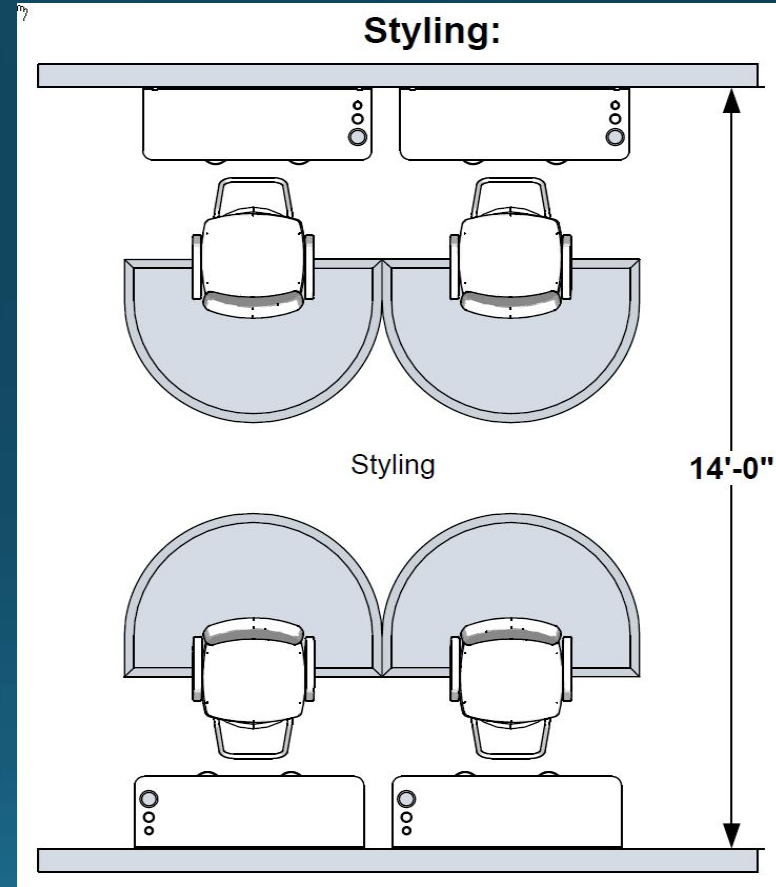
54" centers, minimum  
60" centers, desirable  
72" centers, barbers  
30" clear from the wall



# HairCutting - Styling Area

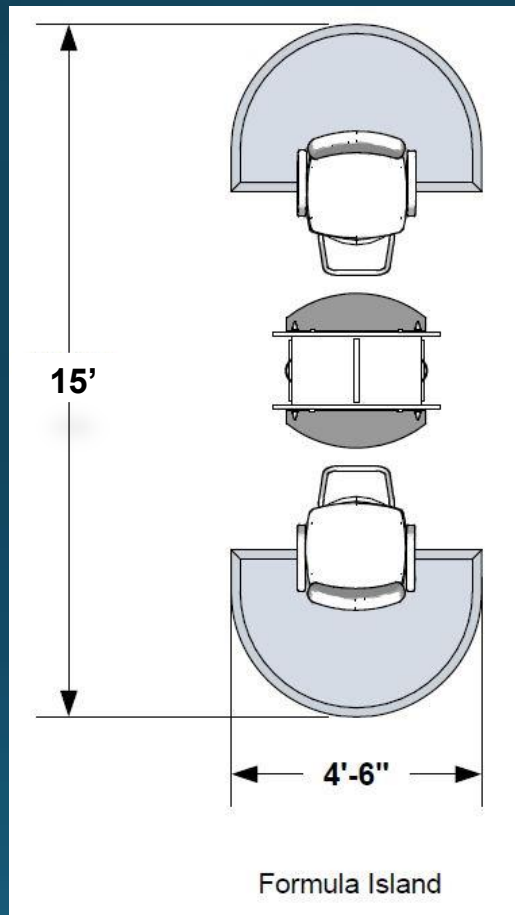
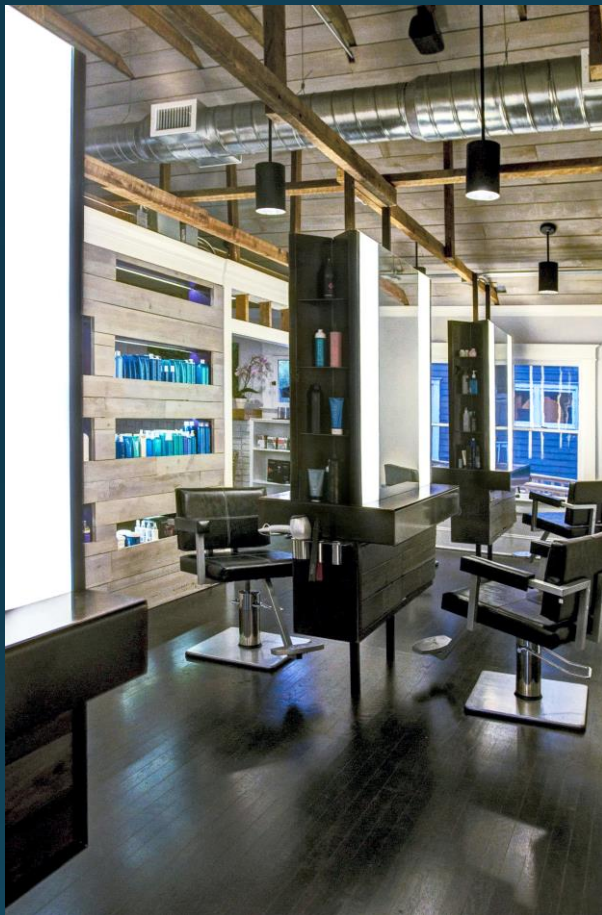


14' minimum





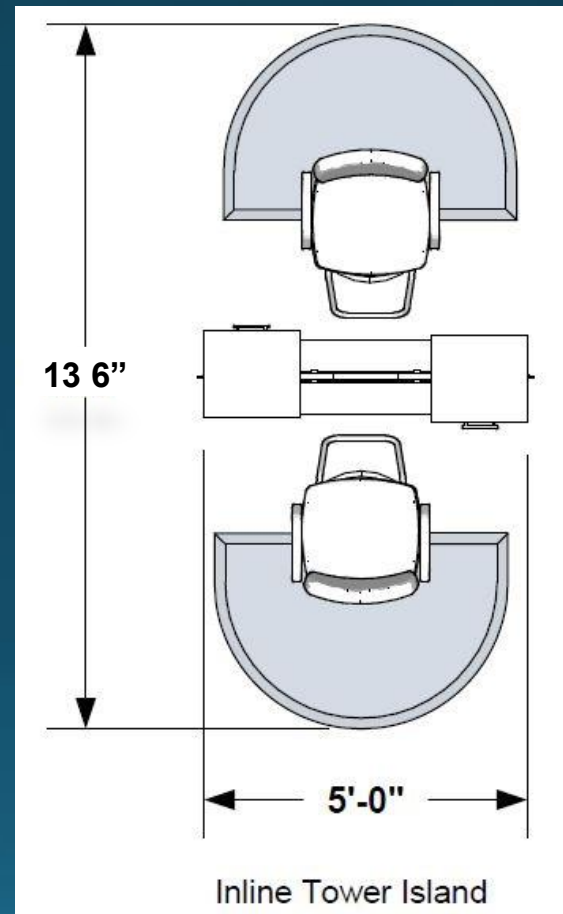
# Back-to-Back Styling Stations



*Consider space requirements as well as "LOOK" preferences*



# Back-to-Back Styling Stations

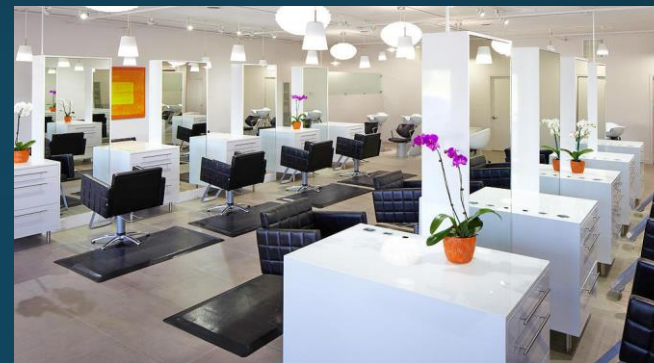
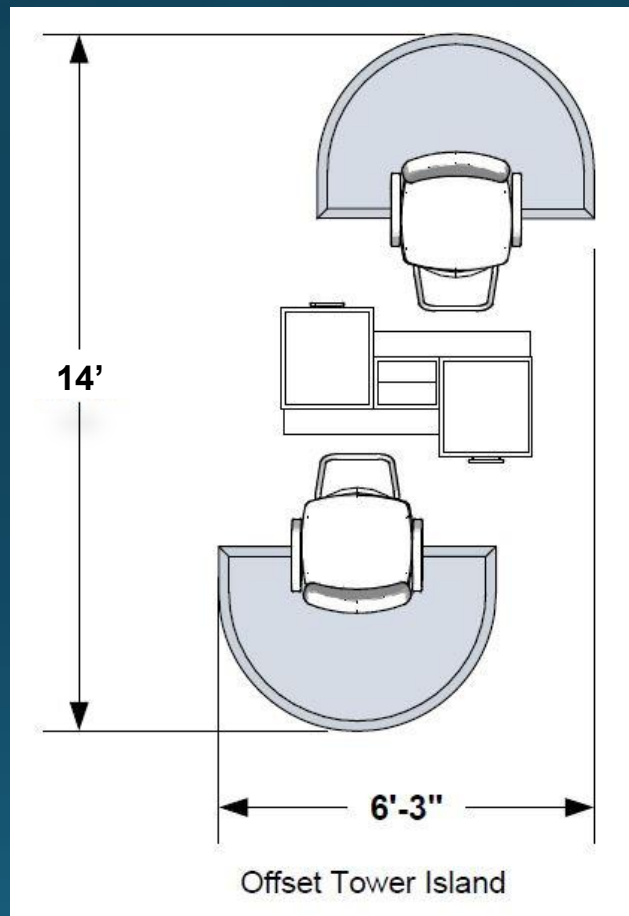


*Consider space requirements as well as "LOOK" preferences*





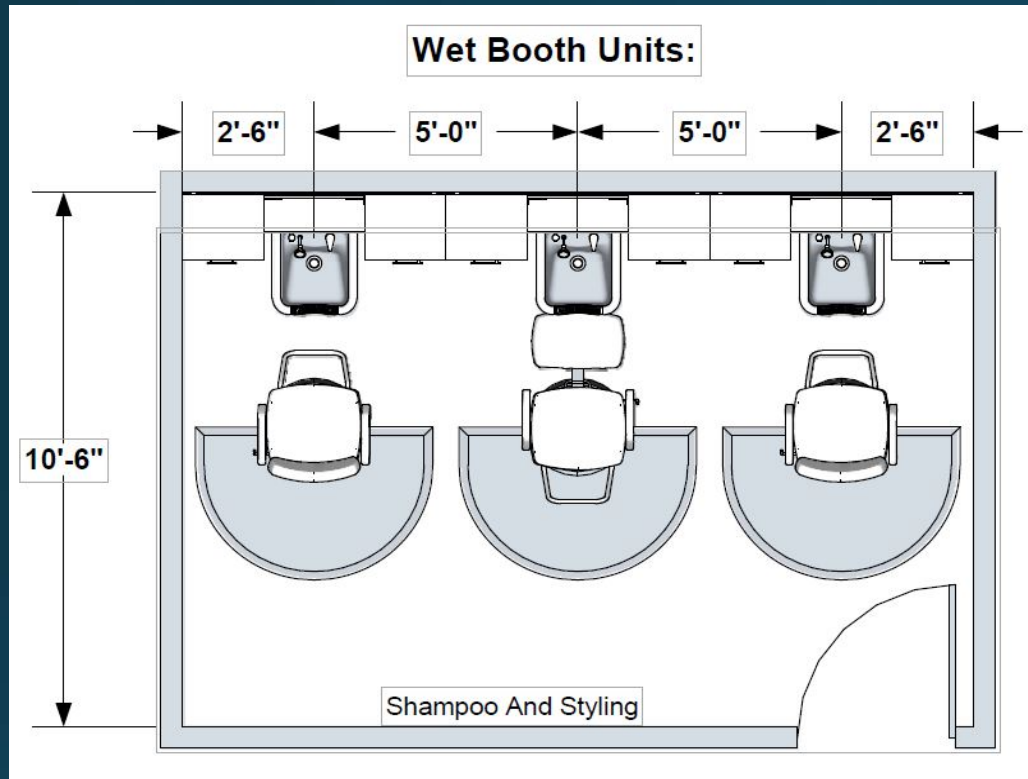
# Back-to-Back Styling Stations



*Consider space requirements as well as "LOOK" preferences*



# WET STATIONS ... Combination Shampoo & Style

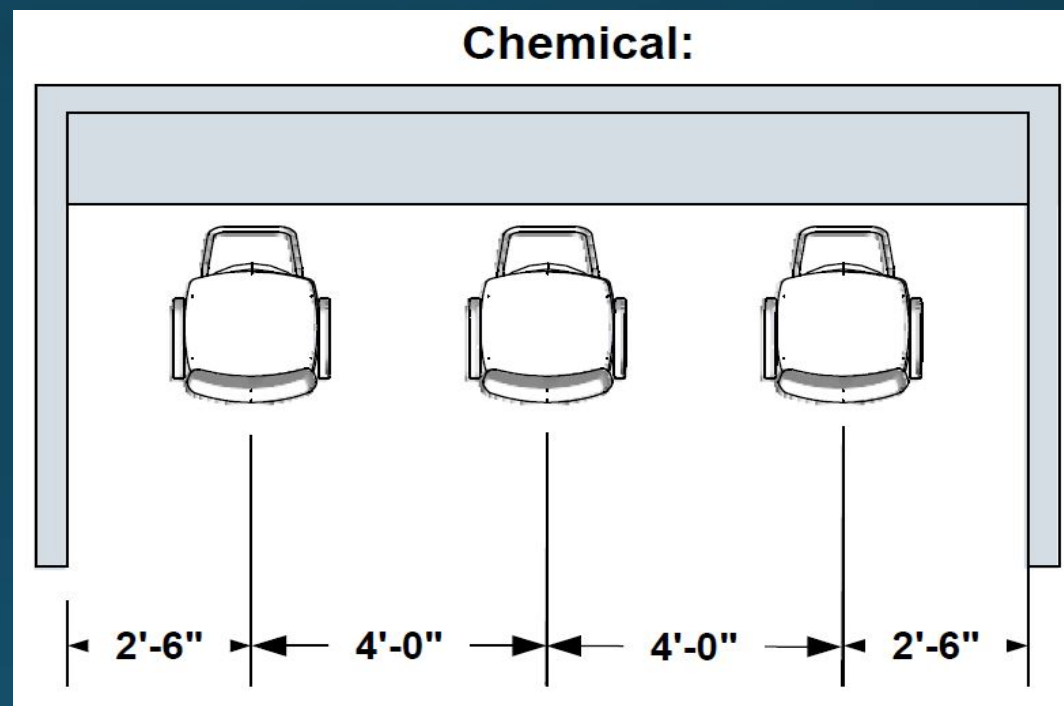


54" centers minimum  
60" centers, typical  
30" clear from wall





# Chemical Treatment Area

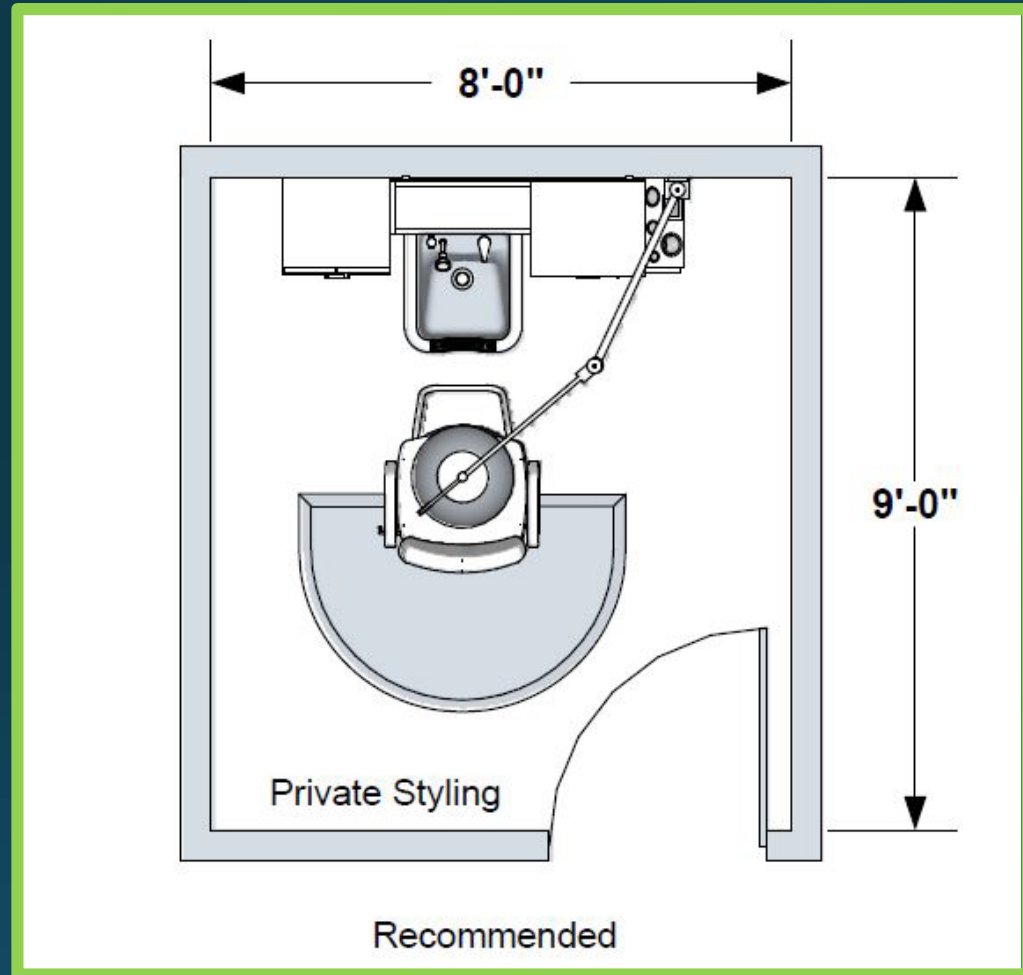


48" centers, minimum  
54" centers, desirable  
30" clear from wall





# Private Styling Rooms



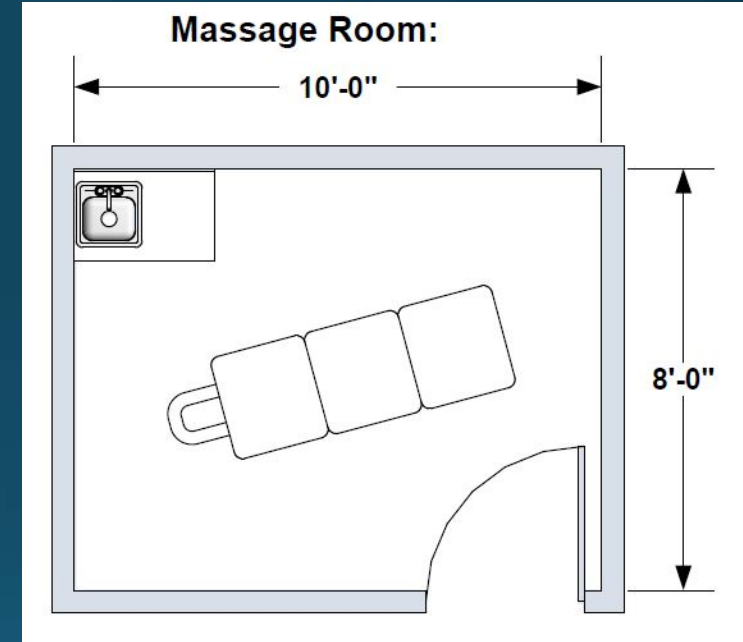
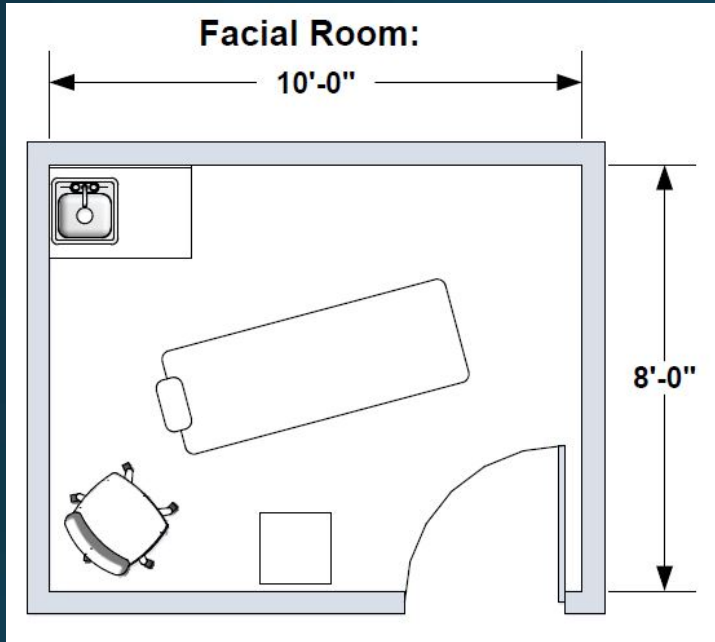
8' x 9'  
with water



*Just a Great Pic !!!*



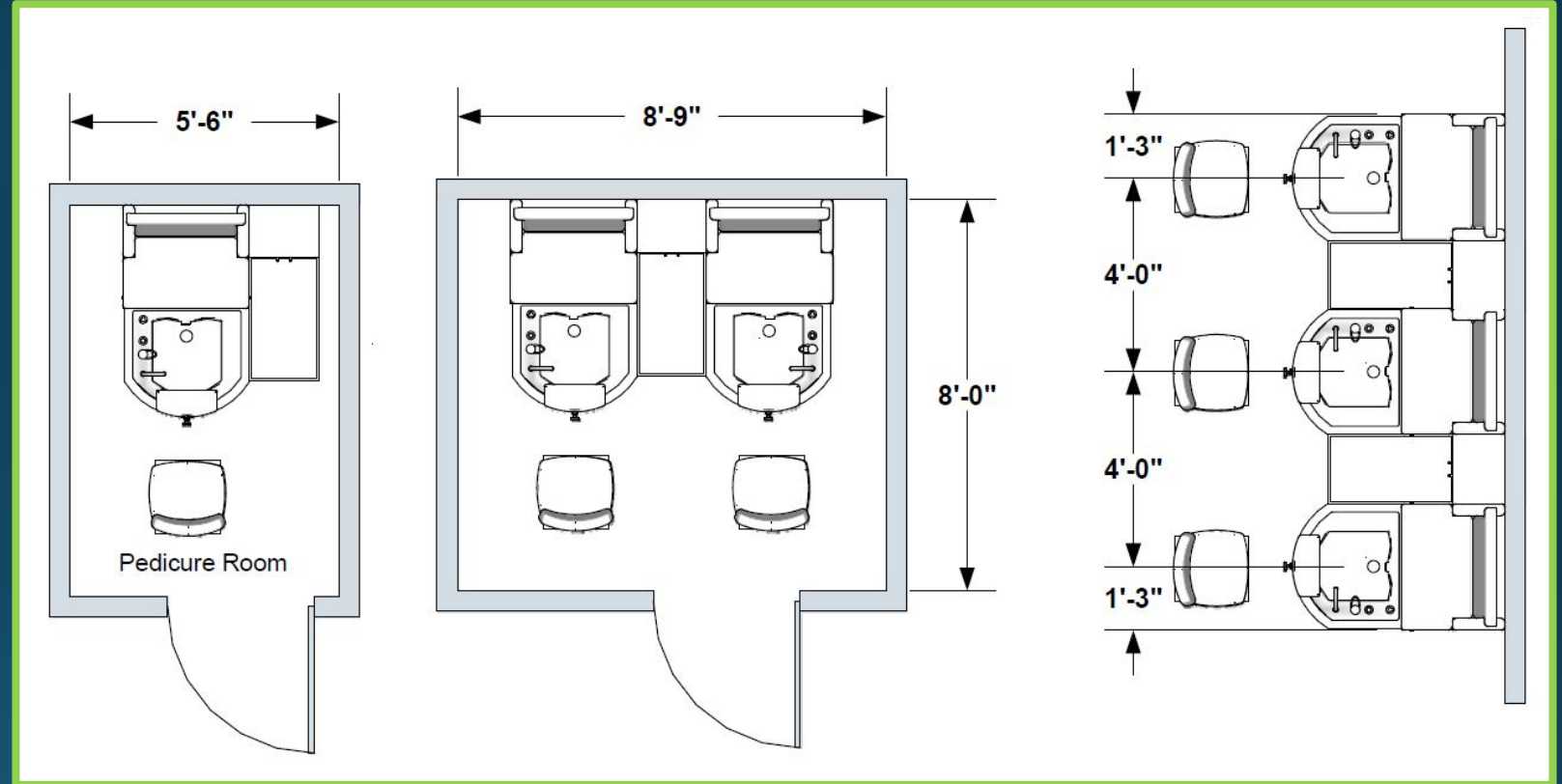
# Private Treatment Rooms



*Recommend generic 8' x 10' with sink vanity*



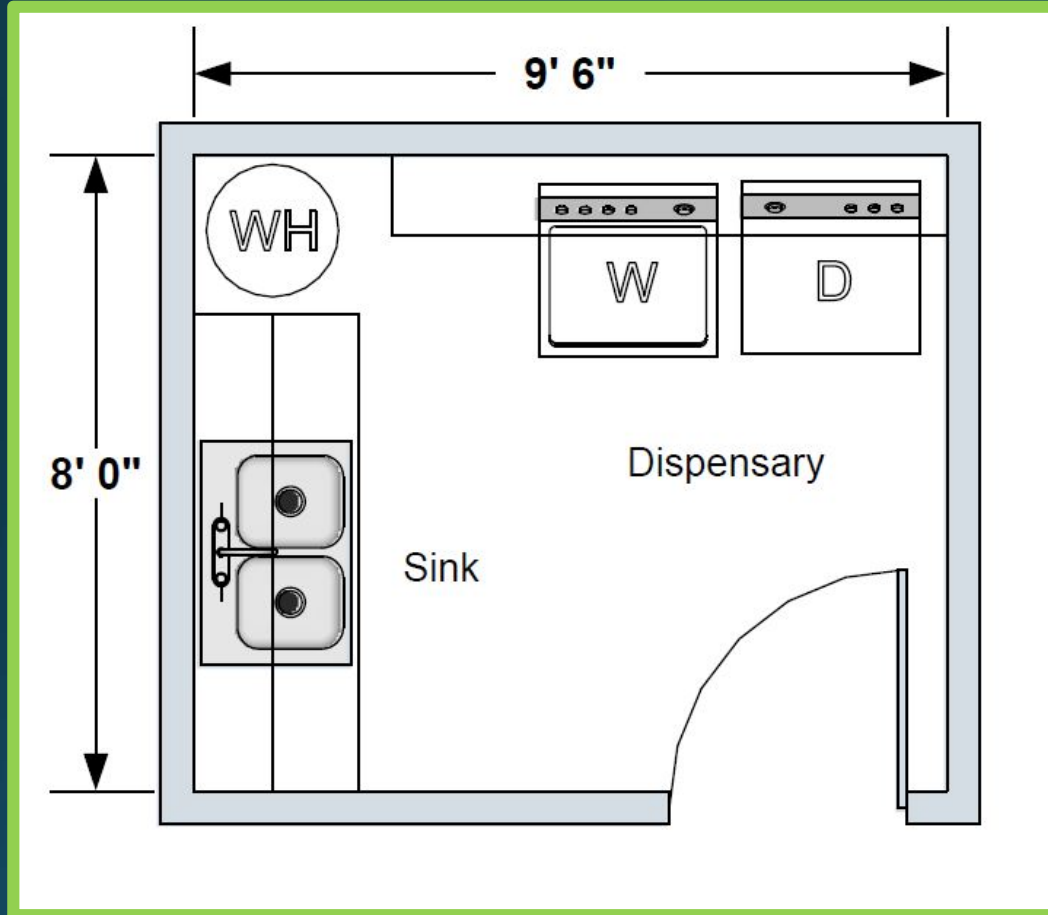
# Pedicure -- Pedicure Rooms



*Depicts the Space & Work Area Required ...*



# Dispensary & Breakroom



Washer & Dryer  
Sink & Work Counter  
Employee Lockers  
Lunch-Break Table-Chairs  
Refrigerator

STORAGE & STORAGE

*Don't forget Mechanicals: Hot Water Heater, Utility Sink, HVAC*



# Handicap Access

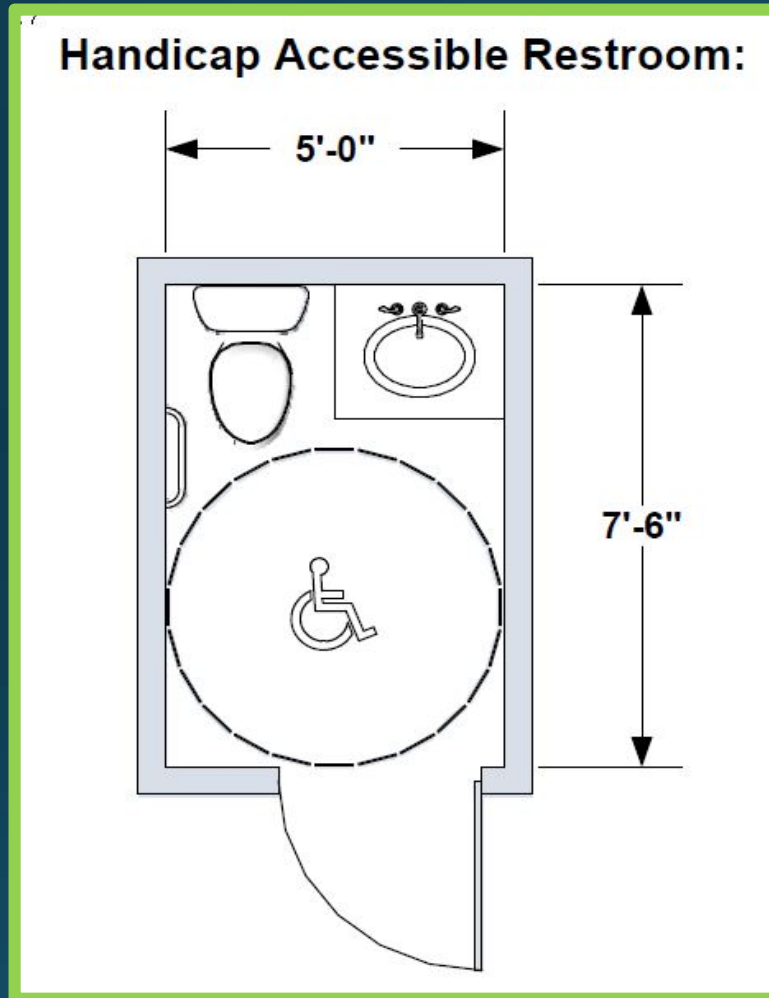
## Code Requirements:

36" Door

60" Turning Radius

34" Sink Height

Safety Hand Rails



*Some cities may require a Handicap Accessible Water Fountain*





# Common Mistakes



Trying to get too much equipment ... in too small a space.

Water supply lines & hot water heater that are too small.

Not having enough electrical power at the right places.



# Common Mistakes



Buying shampoo chairs & bowls that don't go together.

Buying equipment solely on “looks” can be costly

Buying equipment solely on “price” can be **VERY COSTLY**



# *REVIEW & SUMMARY*

**\$#!+ HAPPENS**

*But Great Salons don't just happen!*

*They take planning !*

*Location & Lease*





# *REVIEW & SUMMARY*

Space Plan

Architect Plan

Interior Plan

*Seek the help of professionals!*

Avoid the Common Mistakes



Salon Design with *collins*

THANK YOU

Thank you for your time & consideration.

Do any of you have any questions?



We probably have the answers !

