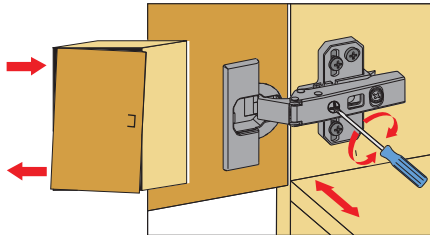
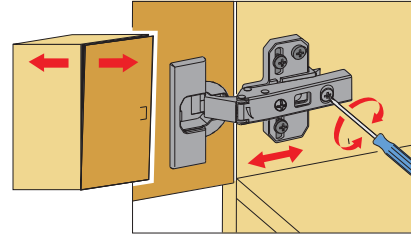


### Overlay adjustment



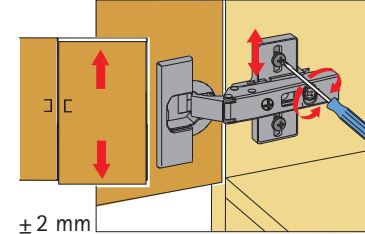
Turn screw clockwise:  
Door overlay decreases (-).  
Turn screw anticlockwise:  
Door overlay increases (+).

### Depth adjustment

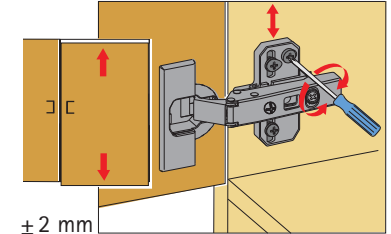


Direct, variable depth adjustment  
with the eccentric screw

### Height adjustment

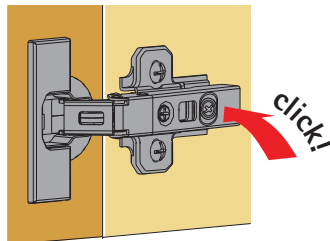
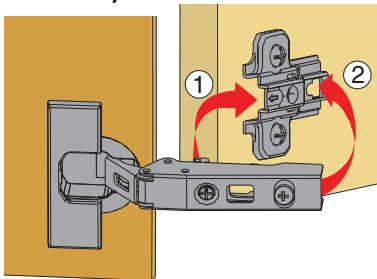


Using height-adjustable mounting  
plates makes it possible to align the  
exact door height.

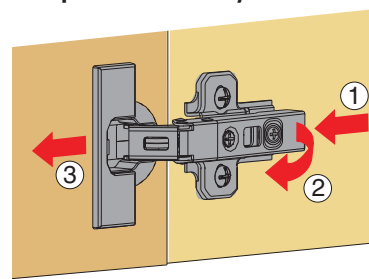


Direct, variable height adjustment  
with eccentric screw

### Assembly



### Snap-on assembly, disassembly



Characteristic for Intermat hinges is the ergonomical snap-on assembly. The hinge is slipped into the front of the mounting plate ①, then a light finger pressure and the hinge arm latches onto the mounting plate ② with an audible click.

The hinge arm is now securely clamped, via five points, with zero play. Doors are clipped on zipper style from top to bottom - the top hinge alone is capable of taking the total weight of the door.

Disassembly is carried out in the opposite direction from bottom to top. The hinge is unlatched by pressing lightly on latch ① which is hidden under the side arm for security reasons. In one movement, the hinge arm is lifted off the mounting plate ② and the door is removed from the cabinet ③.